



STELLENHOF
FARMSTAY B & B
☆☆☆

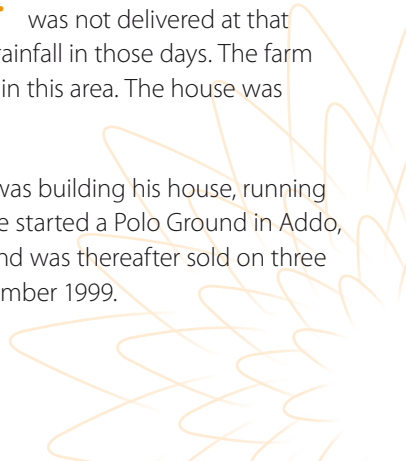




Stellenhof was built in the late 1800's by Mr Dougal McBean. Sir Percy Fitzpatrick got together a group of people to buy land in the Addo area.

Some didn't stay long, as the promised amount of water was not delivered at that stage. McBean built a big dam for there was not a lot of rainfall in those days. The farm started as an orange and grapefruit farm as most still do in this area. The house was designed to stay cool in the hot Addo summers.

Mr McBean was a perfectionist in every way, whether it was building his house, running the farm or buying antiques. He had a love for Polo, so he started a Polo Ground in Addo, which still exists today. he sold the house around 1960 and was thereafter sold on three times before we (the Groenhof) family took over in December 1999.



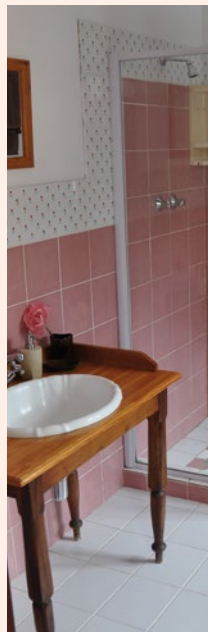
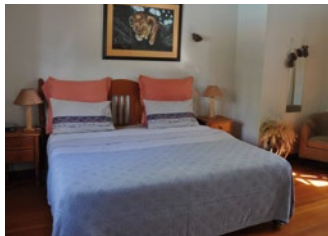
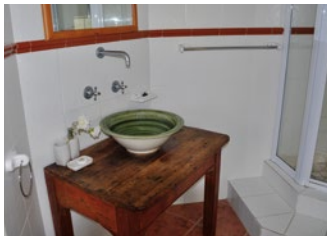
Enjoy our leisure facilities

including an entertainment area with swimming pool, deck chairs and lapa, trampoline and our abundant open eco garden where you can picnic or simply take a stroll.



Choose from
a variety of
accommodation

including spacious double
rooms en-suite, family rooms,
single rooms to our camping
area around the dam.





Discover Greater Addo Sundays River Valley

The Greater Addo Route circles this unique South African Destination and includes the villages of Addo, Colchester, Canonville, Kirkwood and Paterson. Quality graded accommodation in the form of luxury lodges, guesthouses, B&B's, self catering and camping facilities are available throughout the route. The visitor can opt for relaxed home stays, luxury spas, comfortable colonial country houses or basic backpacker accommodation complimented by guided tours and safaris, ferry rides, horse trails, hiking trails, 4 x 4 and off road / adventure facilities with visits to conservation and community projects also offered.

The Greater Addo Route is 100% malaria free and offers some of the best and easily accessible Big 5 and Big 7 game viewing in South Africa. Happy browsing!





**STELLENHOF**
FARMSTAY B&B
☆☆☆

Stellenhof Dairy Farm

51 Divisional Road

GPS: 33°33'01.53 S and 25°42'29.64 E

PO Box 195, Addo, 6105
South Africa

Contact information:

Email: info@stellenhof.com

Tel: +27 (0) 42 233 2423

Fax: +27 (0) 86 733 1453

Mobile: +27 (0) 72 236 9993

visit www.stellenhof.com